

# SITE PLANNING GUIDE



# MR10

GE Excite HDxt 1.5T

# GE Excite HDxt 1.5T

Mobile MRI Trailer MR10



## Eurodiagnostic sp. z o.o.

Kielecka 41A/8

02-530 Warszawa

Poland

Tax number: EU5252386042

This site planning guide shortly presents the mobile unit and describes preparations needed to be made by the client, in order to receive and connect the mobile unit.



# MR10

# GE Excite HDxt 1.5T

Mobile MRI Trailer MR10



## BASIC DATA

<b>System ID:</b>	MR10
<b>Manufacturer:</b>	General Electric
<b>Model:</b>	HDxt 1.5T
<b>Year of production:</b>	2006
<b>Upgrade:</b>	2016
<b>No. of channels:</b>	16
<b>Software:</b>	16.0_V03_1638.1
<b>Gantry opening:</b>	60cm
<b>Max table load:</b>	159kg
<b>Coils:</b>	Head NECK AND SPINE ARRAY 16CH Head Coil CTL Coil Shoulder Coil HD8Ch HD T/R Quad Extremity Coil GP flex Body Array HD 8CH Wrist Array Liberty 9000 8CH Breast Coil HD 8CH NV Array

# MR10



# GE Excite HDxt 1.5T

Mobile MRI Trailer MR10



## TRAILER DETAILS

Type	SCHIEN
Length	13.51m
Width	2.53m (4.13m unfolded)
Height	4.00m
Weight	36 280kg
Min. area for placement	15.50m x 6.50m

## UNIT FEATURES

Air-conditioning in all rooms	YES
Storage cabinets	YES
Sound system and FM tuner	YES
Hydraulic patient lift	YES
Sink with running water	YES
IT/Network connections in operator room	YES

## ADDITIONAL FEATURES

Injector	Spectris Solaris dualhead
Reference clinician workstation	YES
Software	adw 4.4
CD/DVD burner	YES
Duplicator	YES
RIS/PACS/Network connection	YES

# MR10

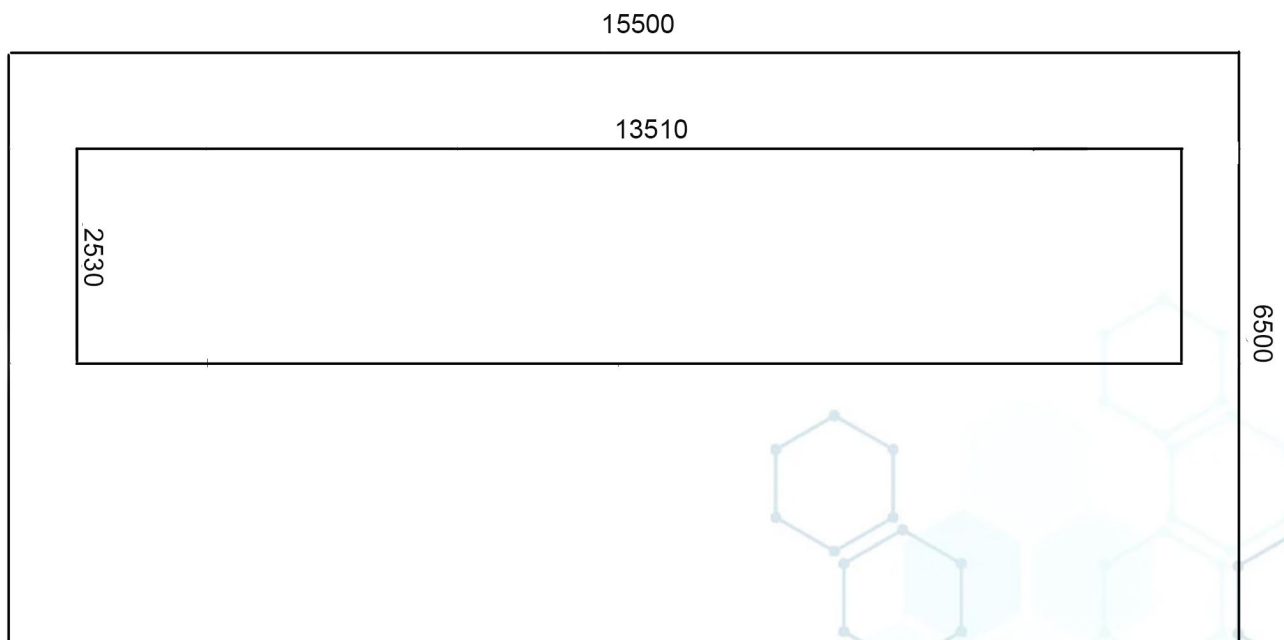
## GROUND SURFACE

A level no more than 2% (1.15 degree) tilt and solid surface with a loading capacity of 36 280kg.

Additional reinforcements are required on unstable ground. This could occur with concrete, road surfacing or pavement (bound material) for example.

Support pad a full pad measuring 13.51m x 4.13m located as shown on the diagram below. The support pad must be level (no more than 150mm variations over length and 50mm variation across length) to insure proper handling of the mobile MRI system.

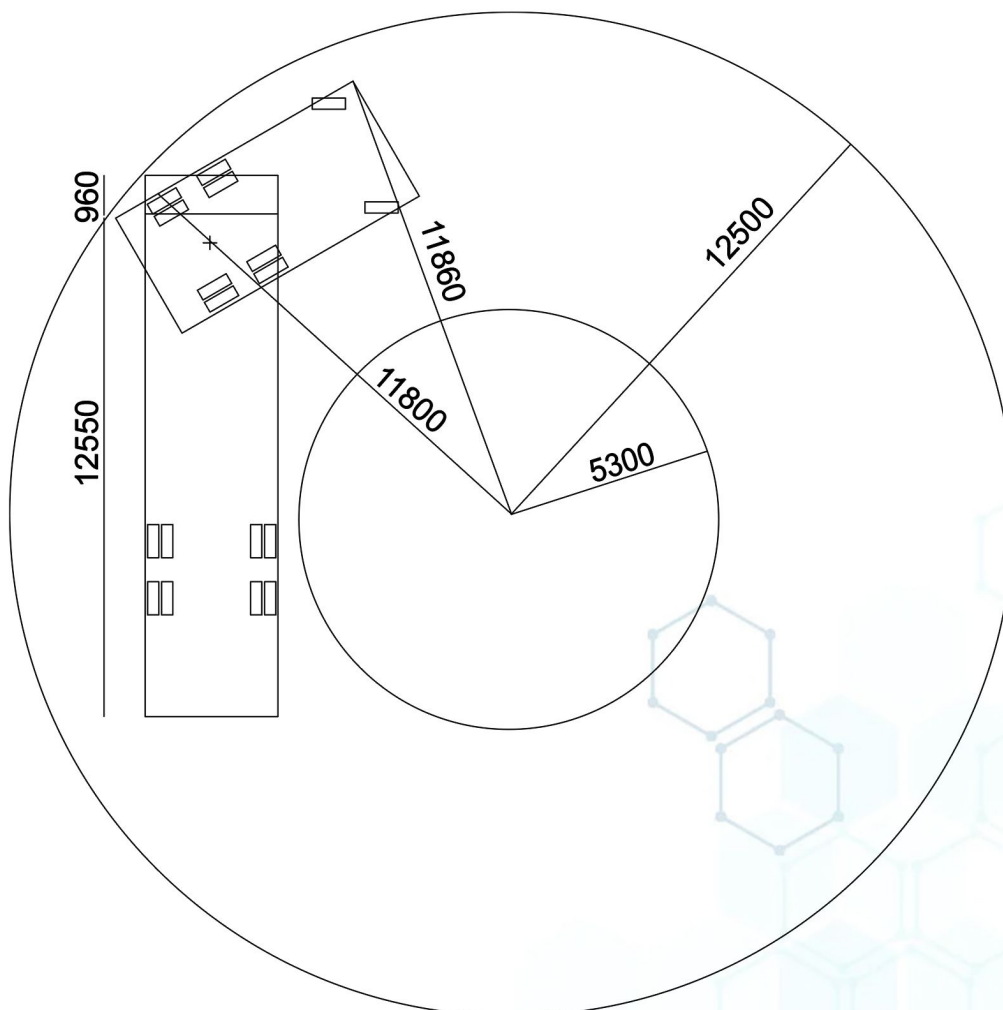
Service pad a full pad measuring 15.50m x 6.50m located as shown on the diagram below, is recommended to provide service access and magnet helium transfer.



If you have any doubts regarding the placement and access, please contact Eurodiagnostic engineer.

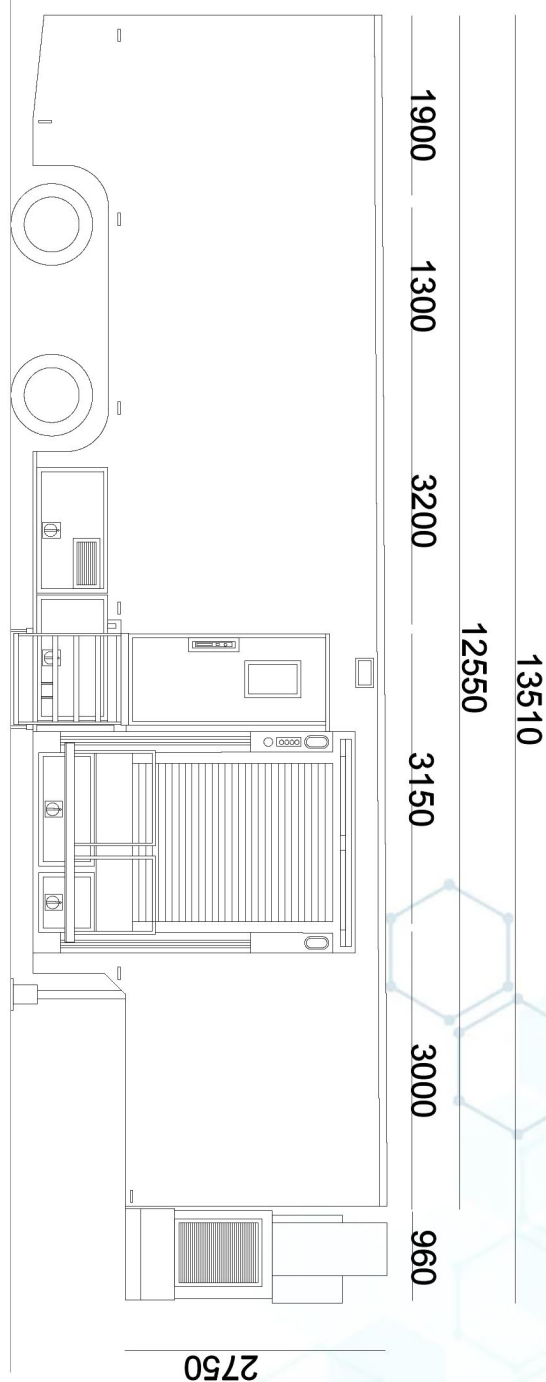
## ACCESS ROUTE

The entrance to the location must be, passable, curb free and clear of parked cars: this is for both delivery and collection. The access way must have a minimum width of 7.2m. The radius of the turning circle should have an external radius of 12.5m. and an internal radius of 5.3m. An engineer from Eurodiagnostic can be consulted on placement and access. Please look at the illustration below that details the turning circle needed for the trailer.



## MOBILE UNIT LAYOUT

The mobile unit can be accessed, via a staircase (105cm) and patient lift, both located on the front right side of the unit. The back end is also equipped with a door (leading to the back of the magnet), but this is only for service purposes. The patient lift can be used, to enable patient trolley access. The patient lift has a dimension of 210 x 160cm and a max capacity of 450kg.

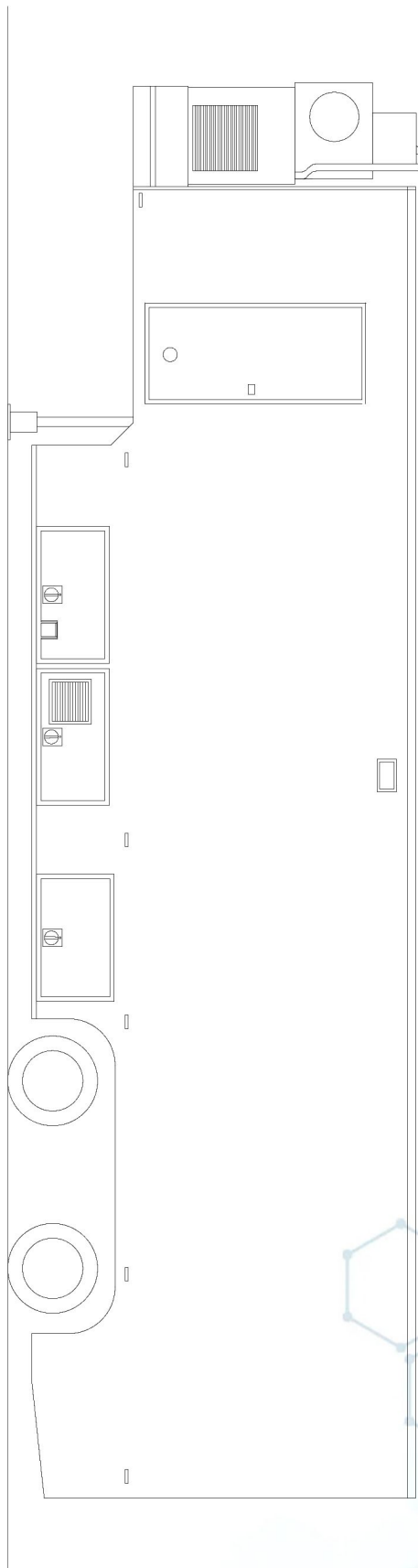


**MR10**

# GE Excite HDxt 1.5T

Mobile MRI Trailer MR10

**ED** EURO  
DIAGNOSTIC

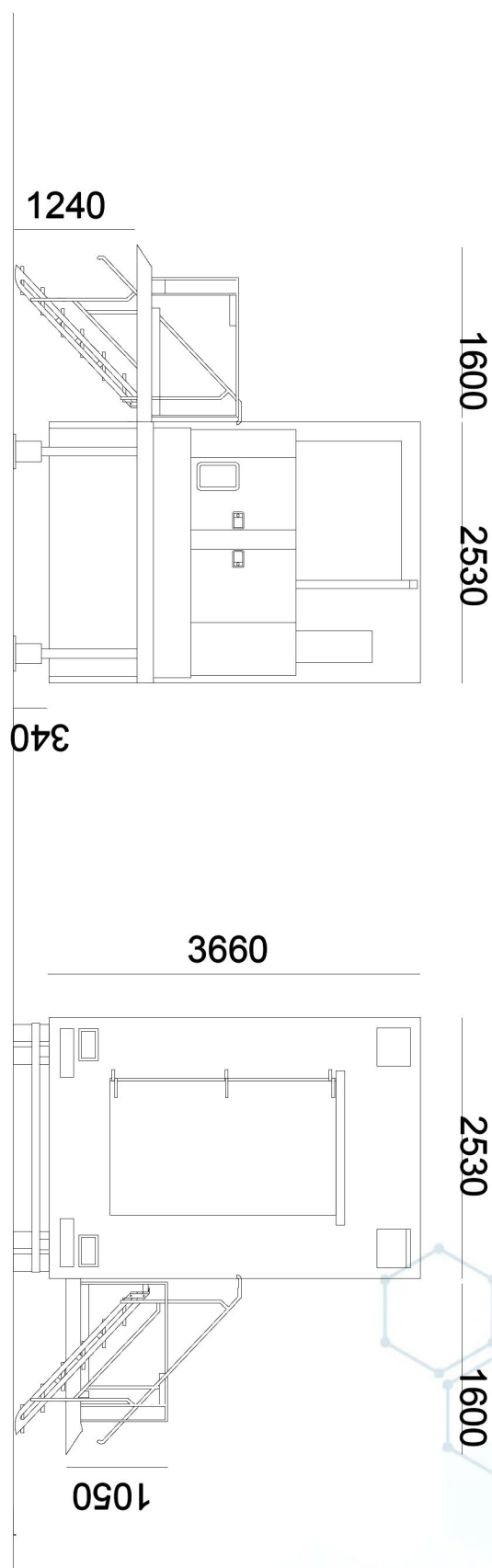


**MR10**



# GE Excite HDxt 1.5T

Mobile MRI Trailer MR10

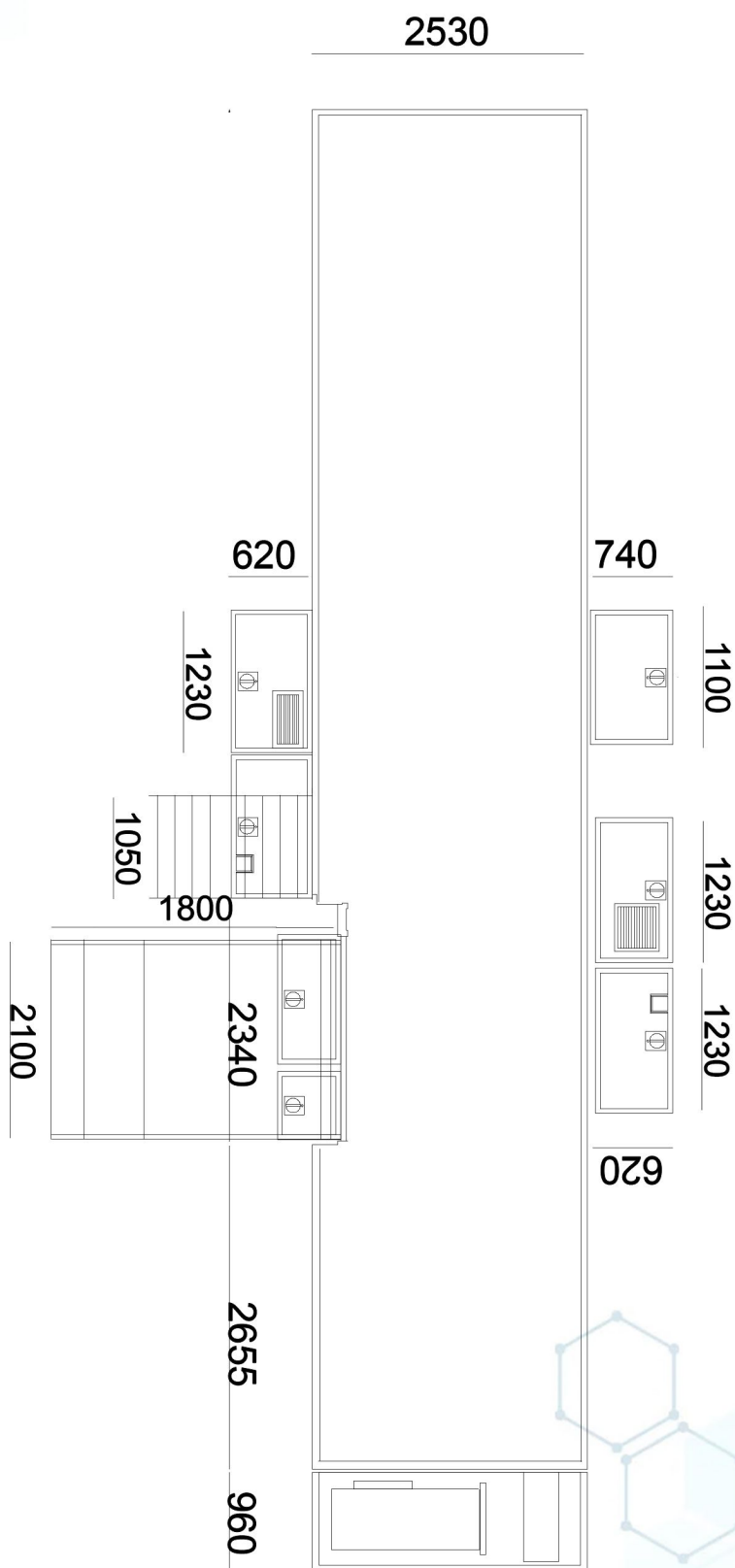


## MR10

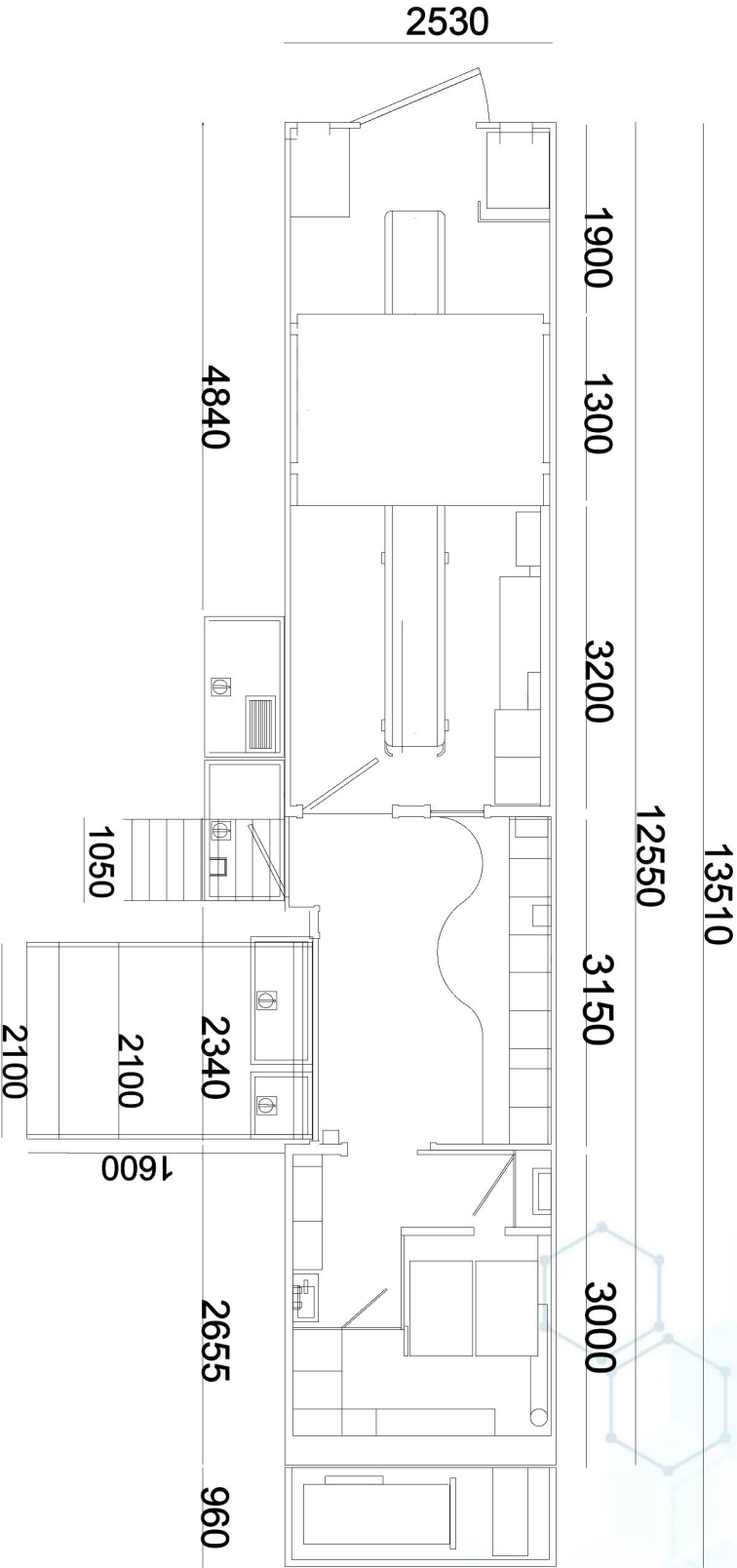
# GE Excite HDxt 1.5T

Mobile MRI Trailer MR10

**ED** EURO  
DIAGNOSTIC



**MR10**



## PHONE AND NETWORK

The mobile unit is equipped with data lines (RJ45 sockets). Socket/switch is available, in the operator room, for auxiliary communication equipment such as computers, laptops or IP telephones.

The RJ45 plugs found inside the trailer must be connected to the hospitals network, via the RJ45 connectors/sockets found on the outside of the trailer (belly compartment). The connection of computers, phones and other communication equipment is the client's responsibility.

## POWER REQUIREMENTS

<b>Power cable length</b>	15 – 20m
<b>Type of socket required for power supply</b>	Fixed socket 5P 125A 400V IP67
<b>Maximum power parameters</b>	120kW
<b>External connection protection</b>	160A
<b>Cable length up to 50m</b>	5 x 35mm <sup>2</sup> (copper cable) 5 x 65mm <sup>2</sup> (aluminium cable)

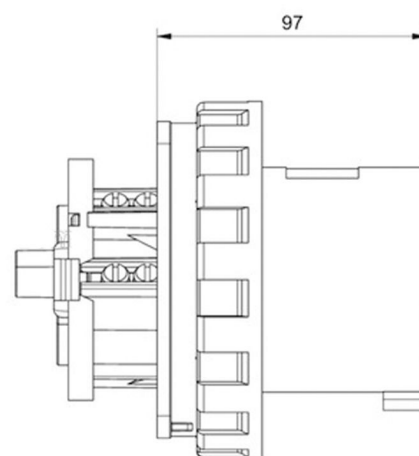
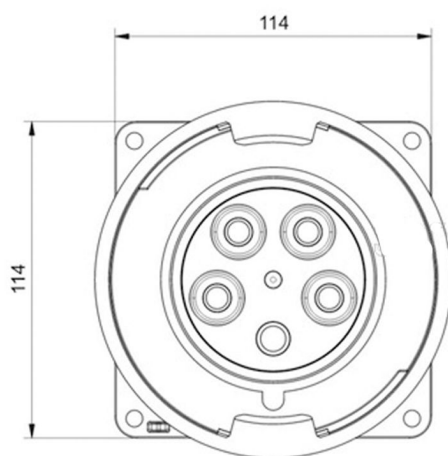
The customer is responsible for bringing the appropriate cable to the electrical box. Cable cross-section up to 50 linear meters: 5 x 35mm<sup>2</sup> (copper cable) or 5 x 65mm<sup>2</sup> (aluminum cable) above 50 linear meters, the cable cross-section should be increased.



## POWER BOX



## SOCKET



## SERVICE

Maintrance and full service contract of mobile unit included. In situations where units are delivered without a contact person on site (e.g. evenings, nights) please ensure the connection stands under tension and the rotating field has been checked. Furthermore, an uninterruptible electric power supply must be warranted for the whole charter situation.

If any high voltage electrical installations are found near the requested location, this may interfere with magnet field.

The client is responsible for all necessary preparations of the installation location, the access route as well as the provisions of the required connections. The client is also responsible for possible approval procedures.

**For technical questions, please contact:**

Radosław Borkowski

mobile: +48 692 428 731

email: [rborkowski@eurodiagnostic.pl](mailto:rborkowski@eurodiagnostic.pl)